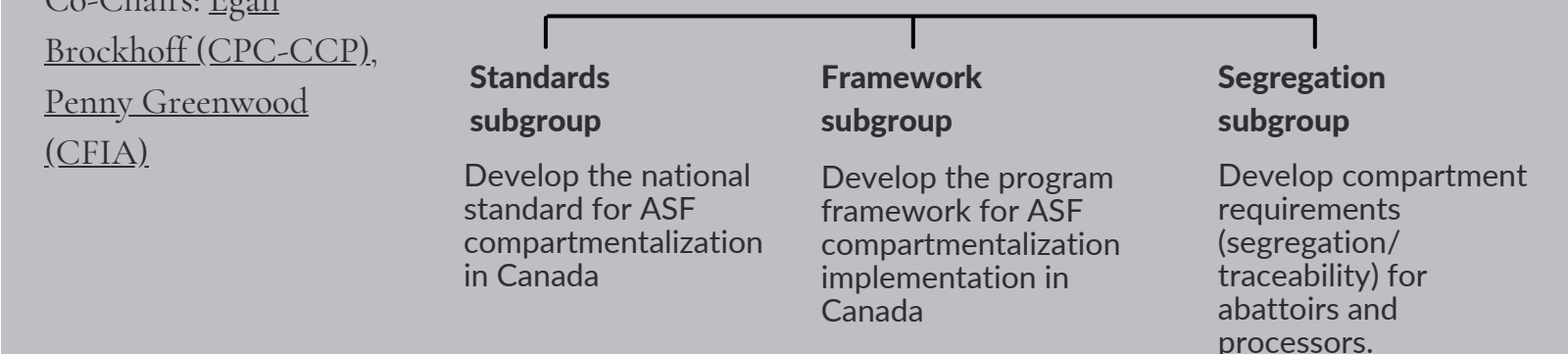
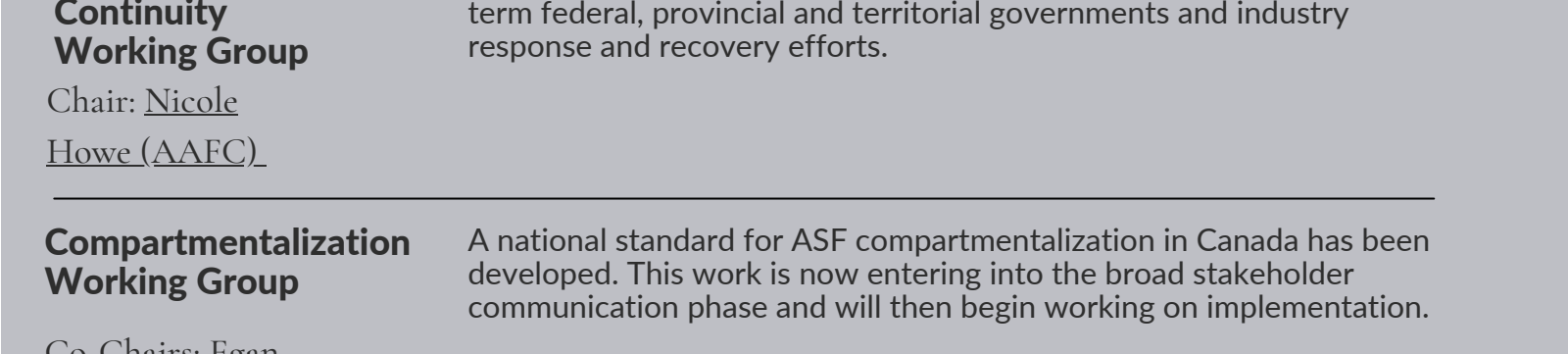
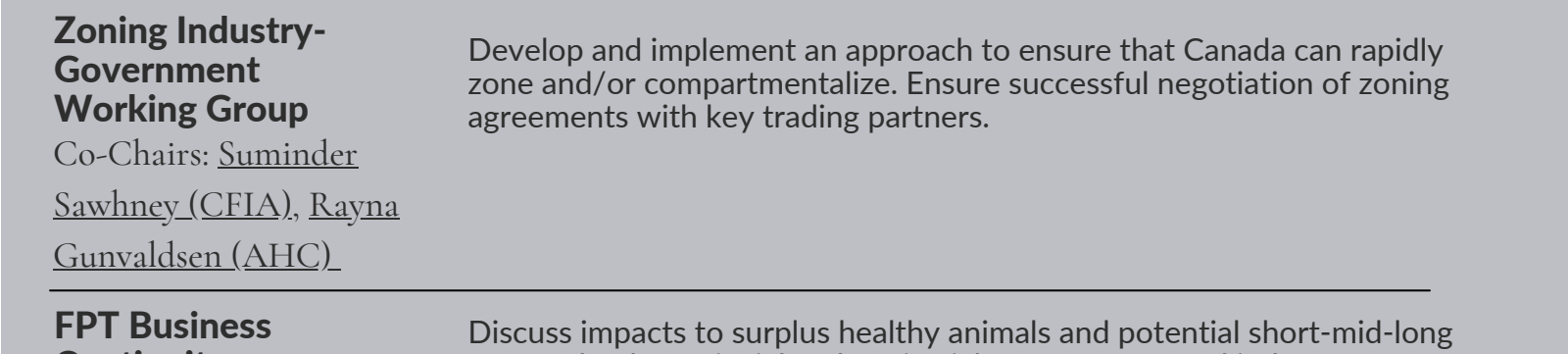
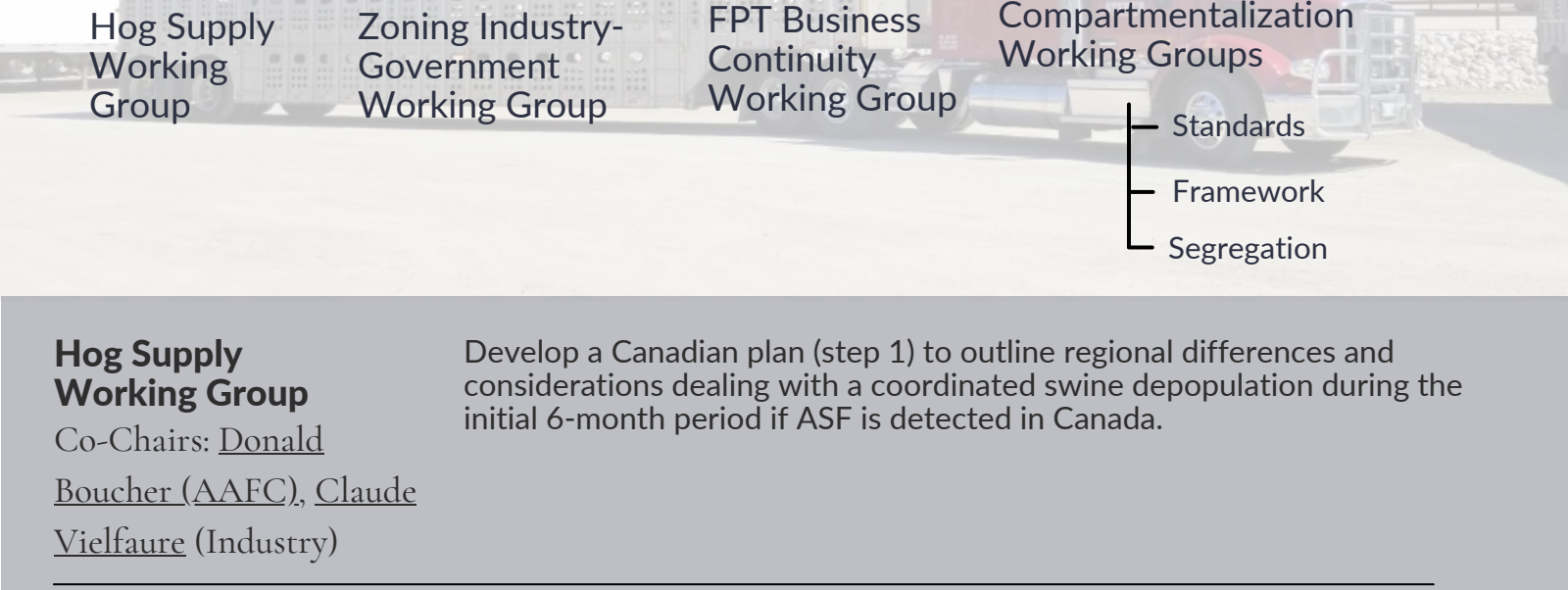
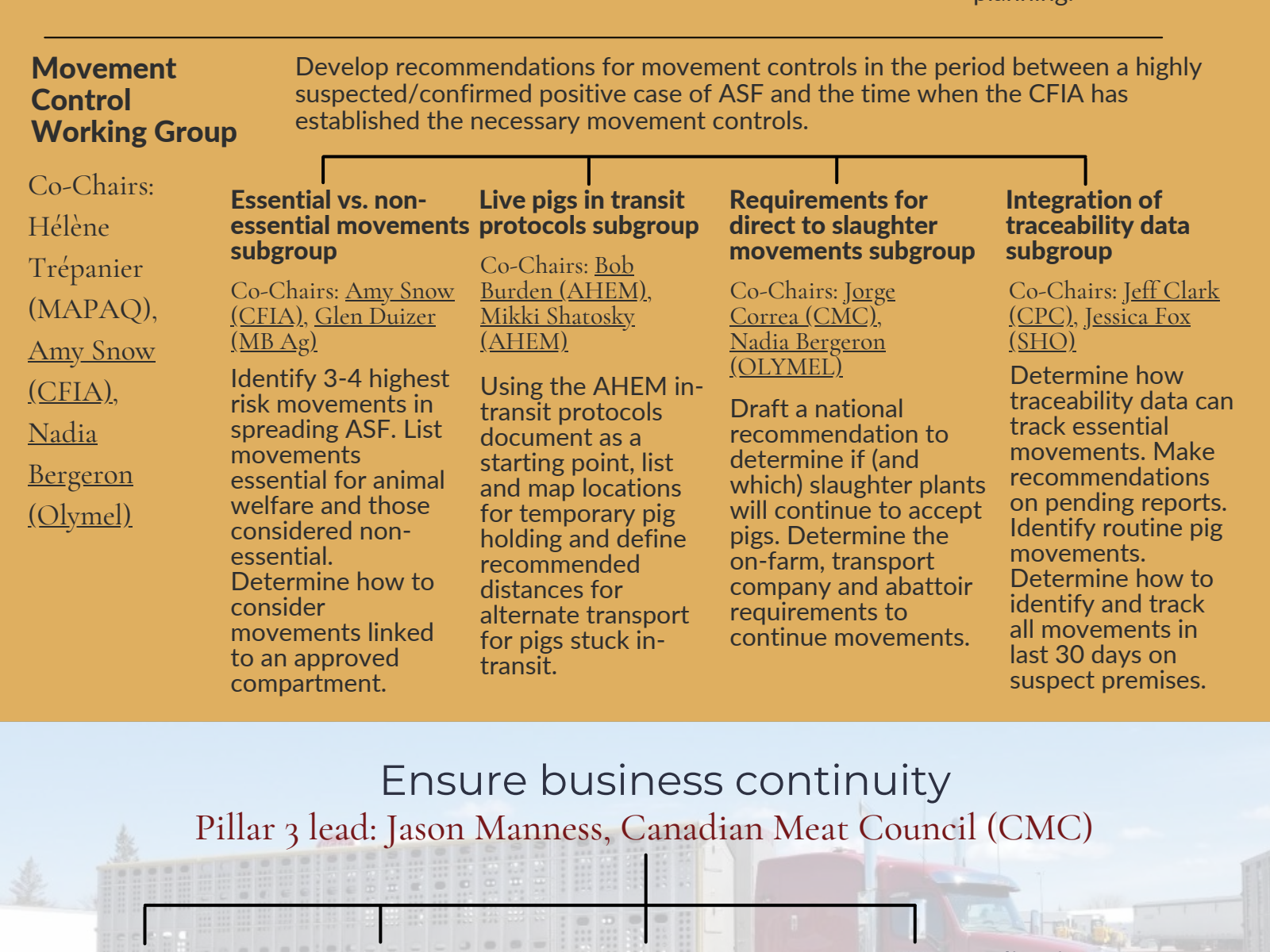
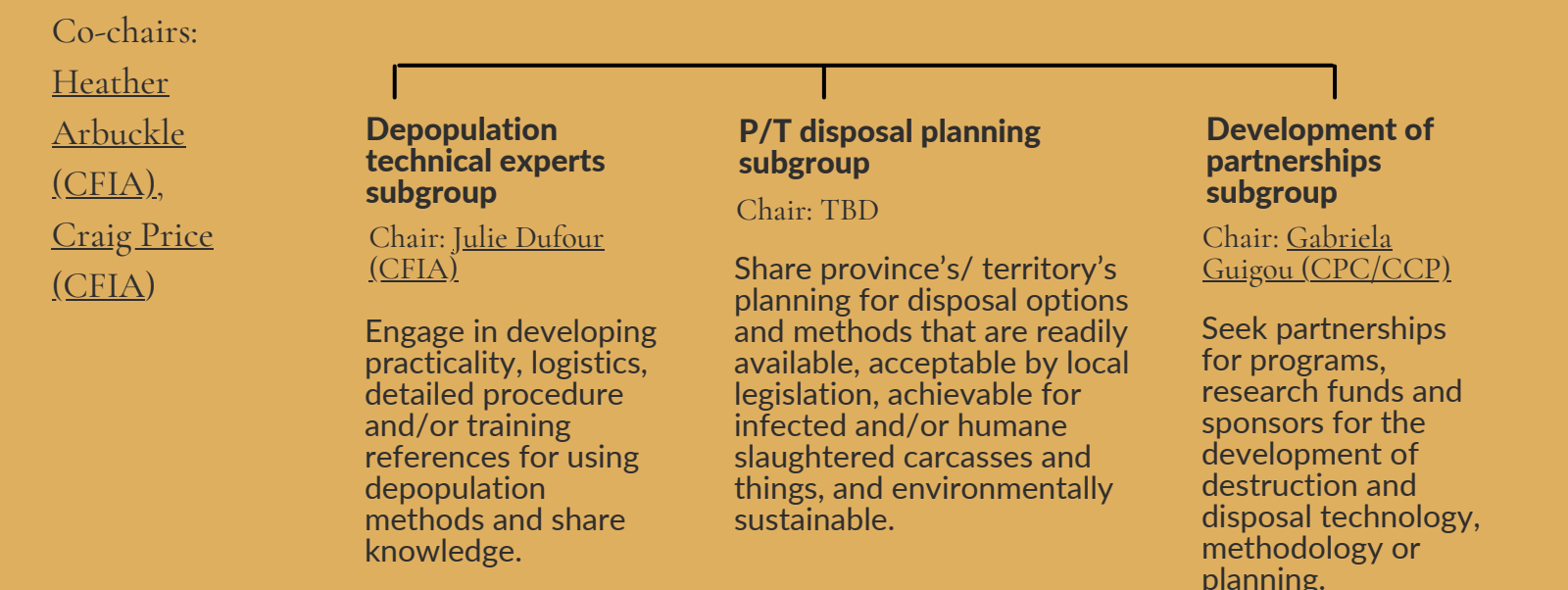
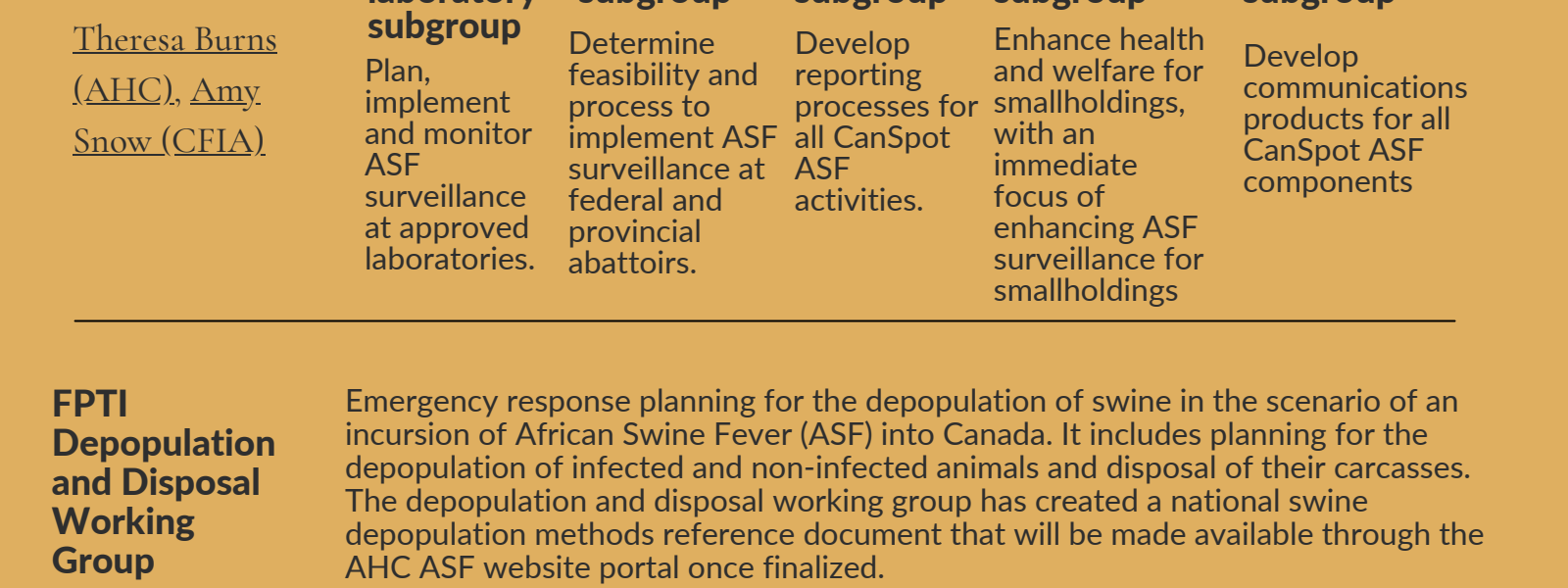
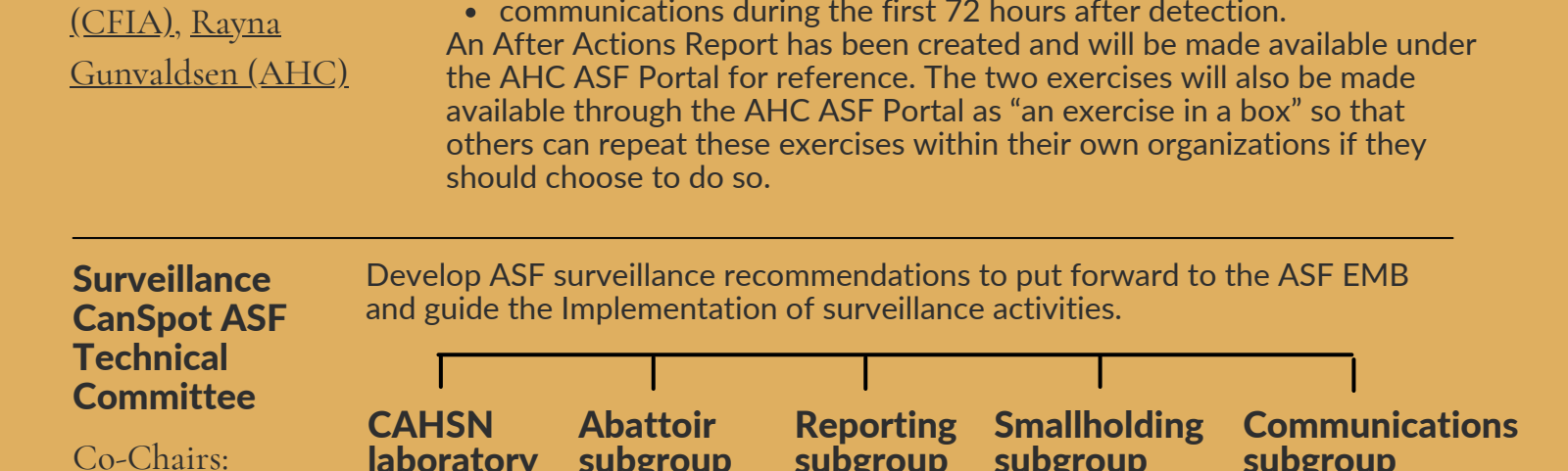
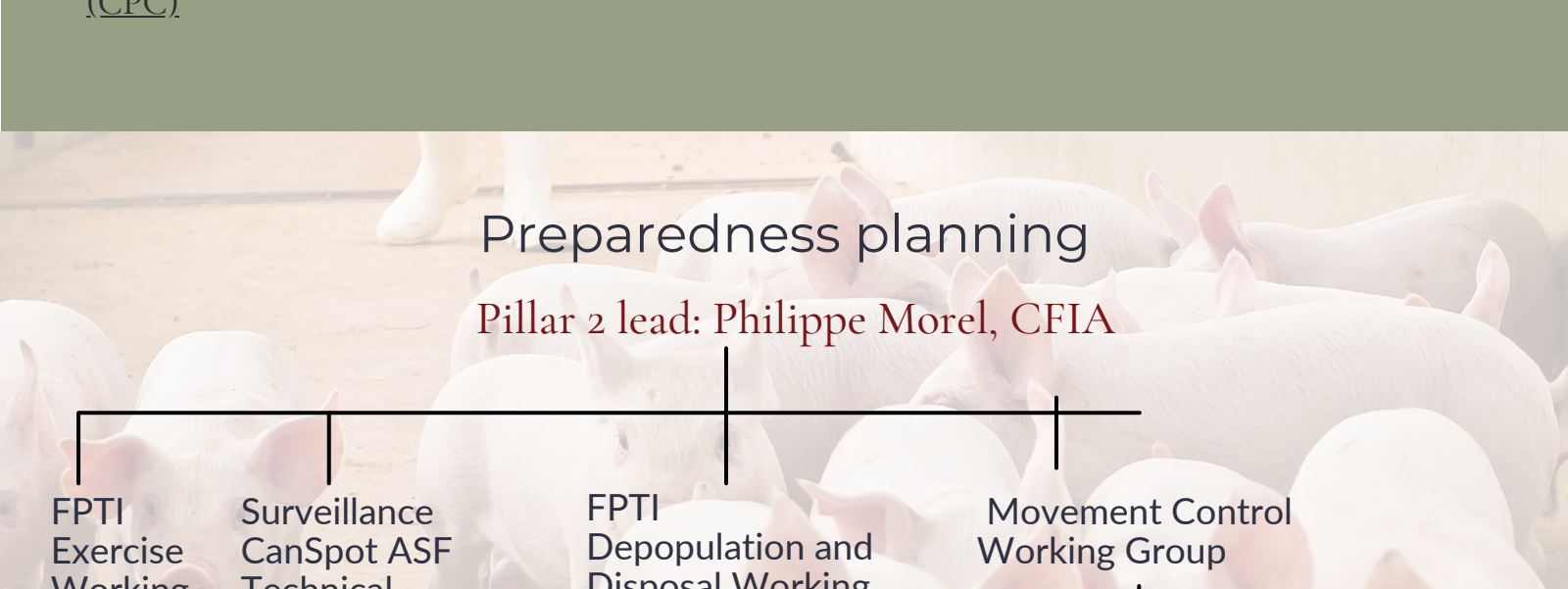
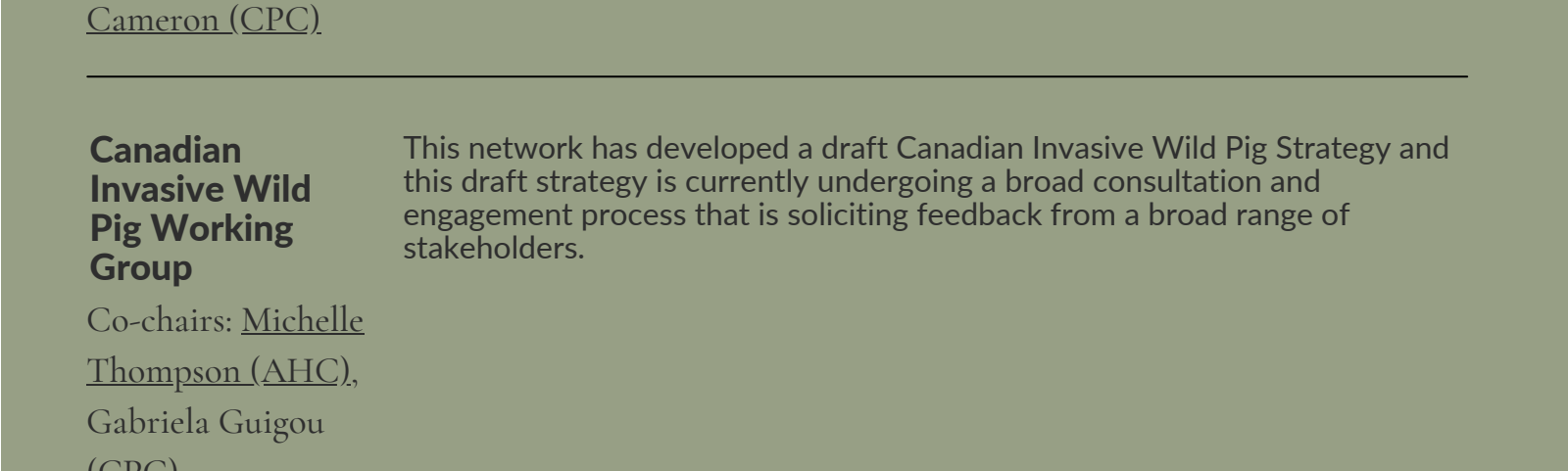
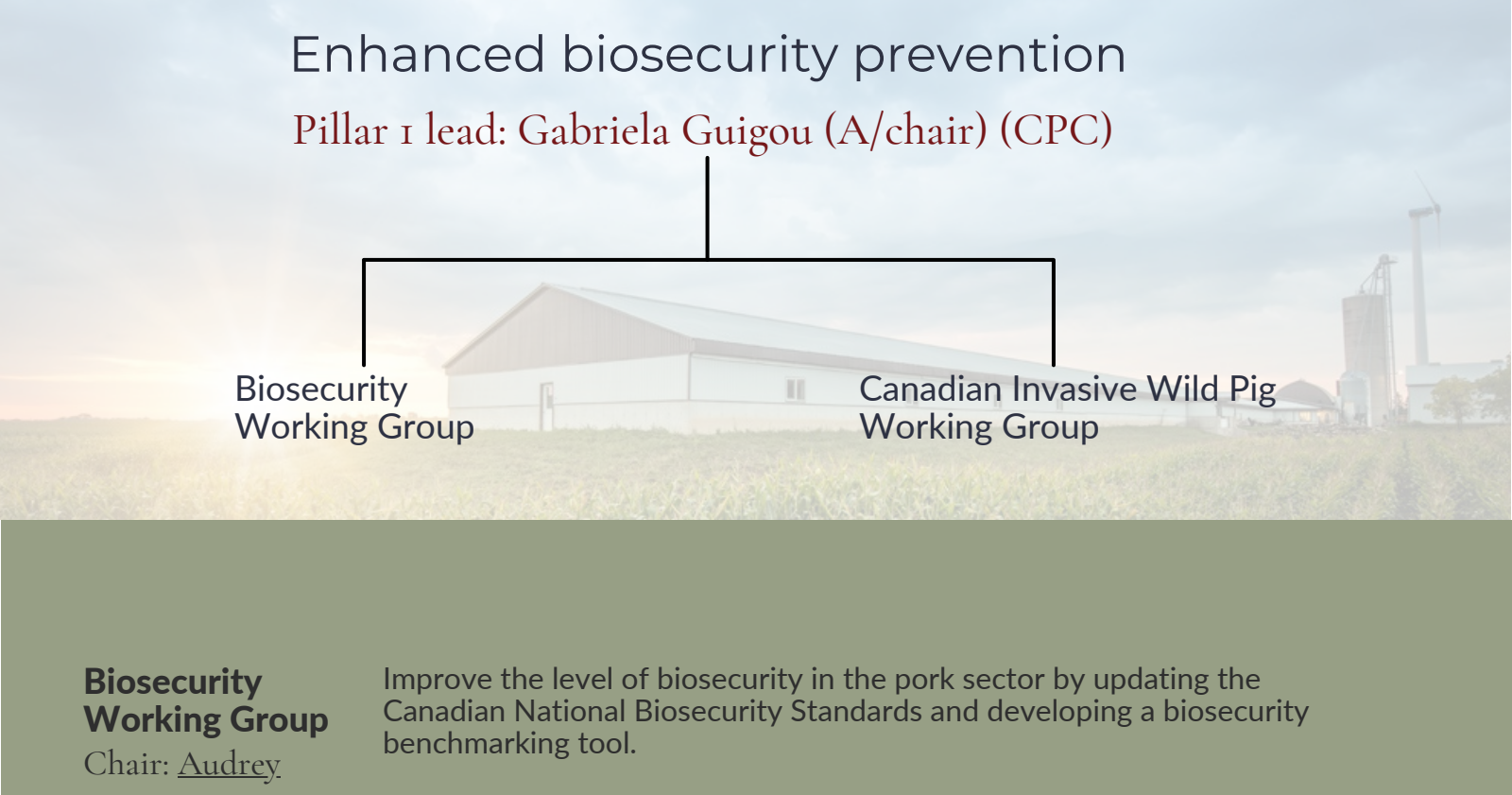
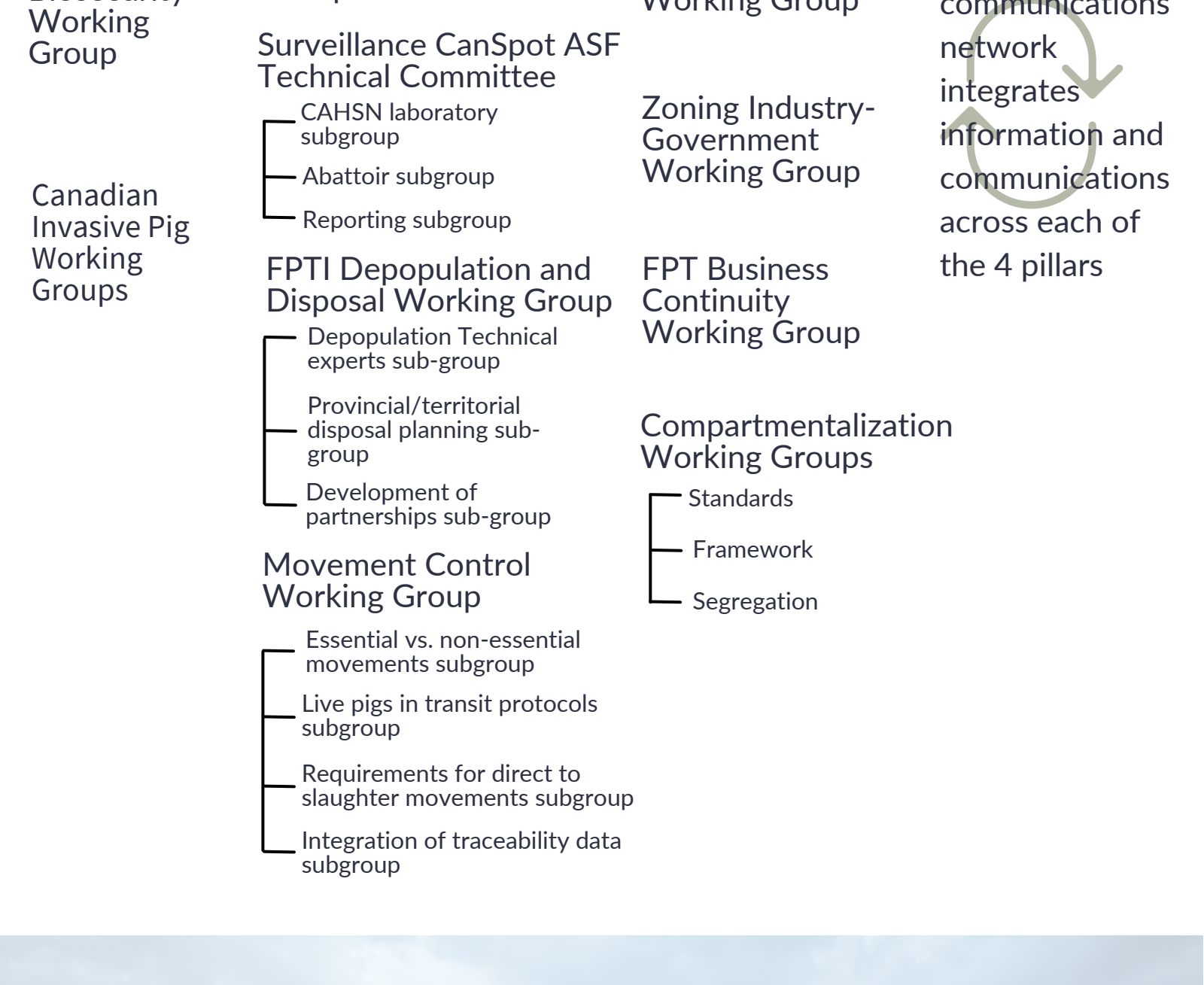
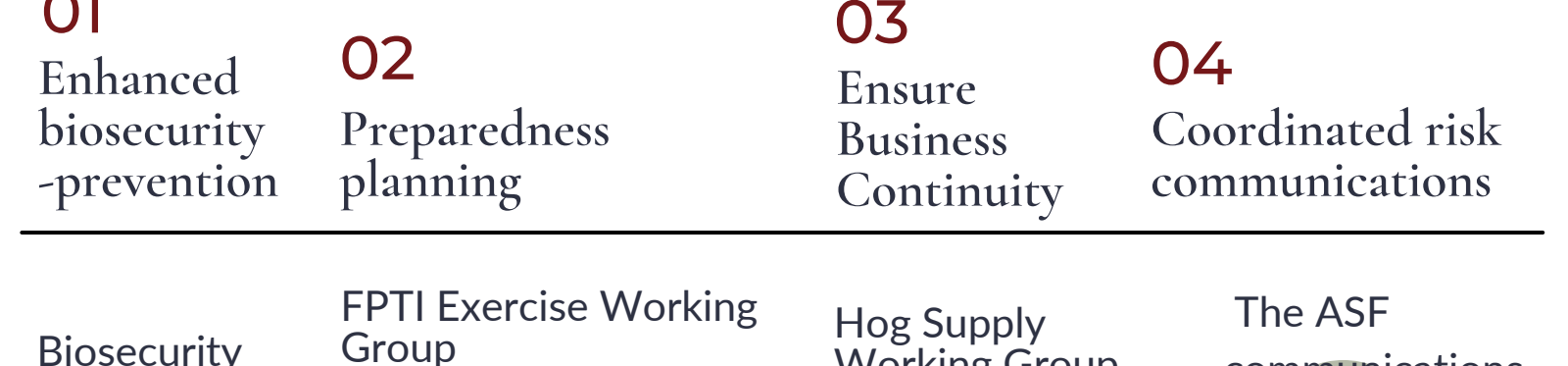
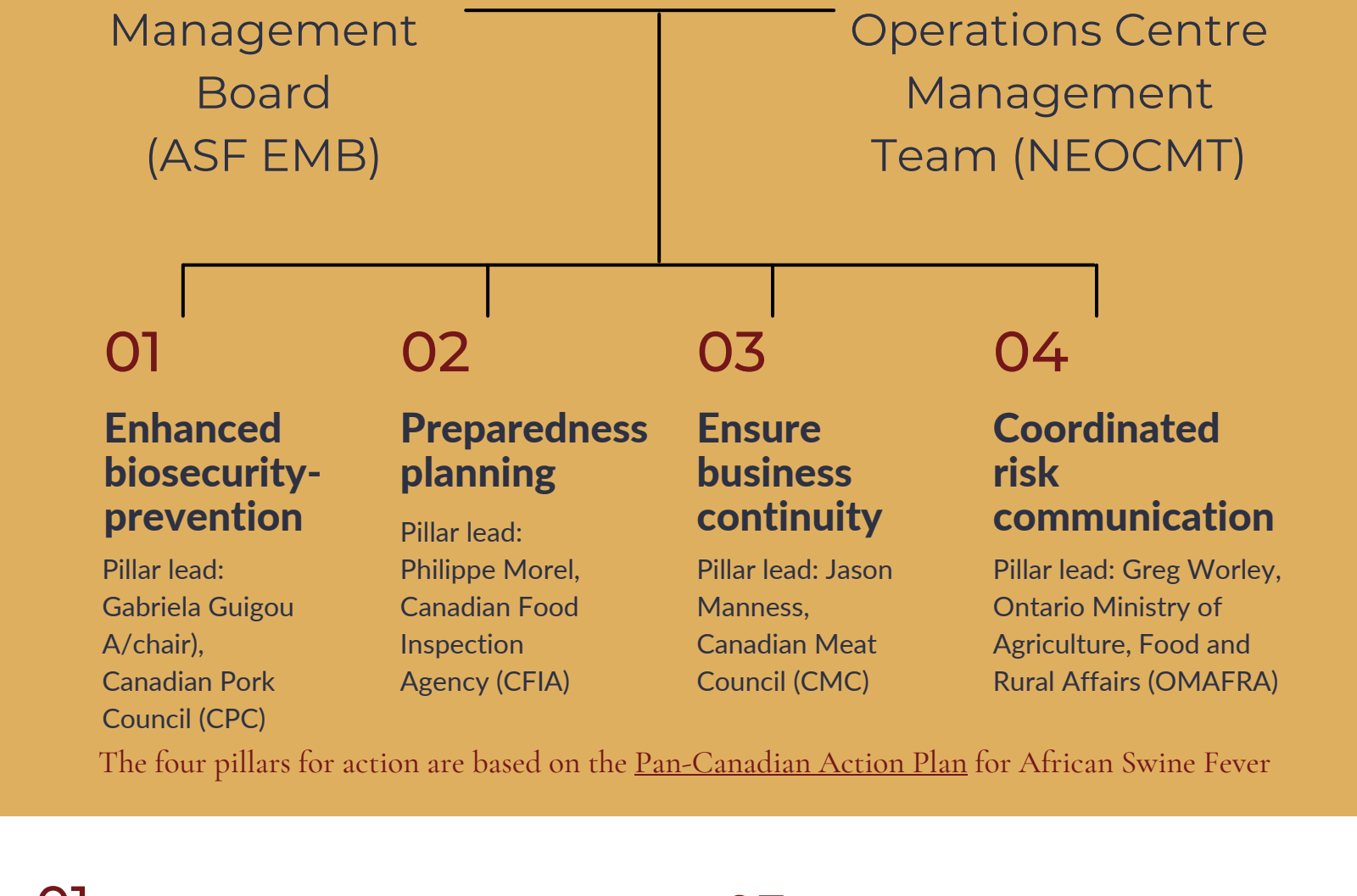




African Swine Fever Executive Management Board (ASF EMB) Organizational Chart

National-level committees and working groups in Canada

Prepared by Animal Health Canada (AHC)



Coordinated risk communication

Pillar 4 lead: Greg Worley, OMAFRA

ASF Communication Network

Formalize the collaborative and multijurisdictional approach in the area of communications with regards to ASF prevention and preparedness, and create leadership from various partners to leverage their audiences, expertise and resources.

Chair: [Micheline Joannisse \(CFIA\)](#)